

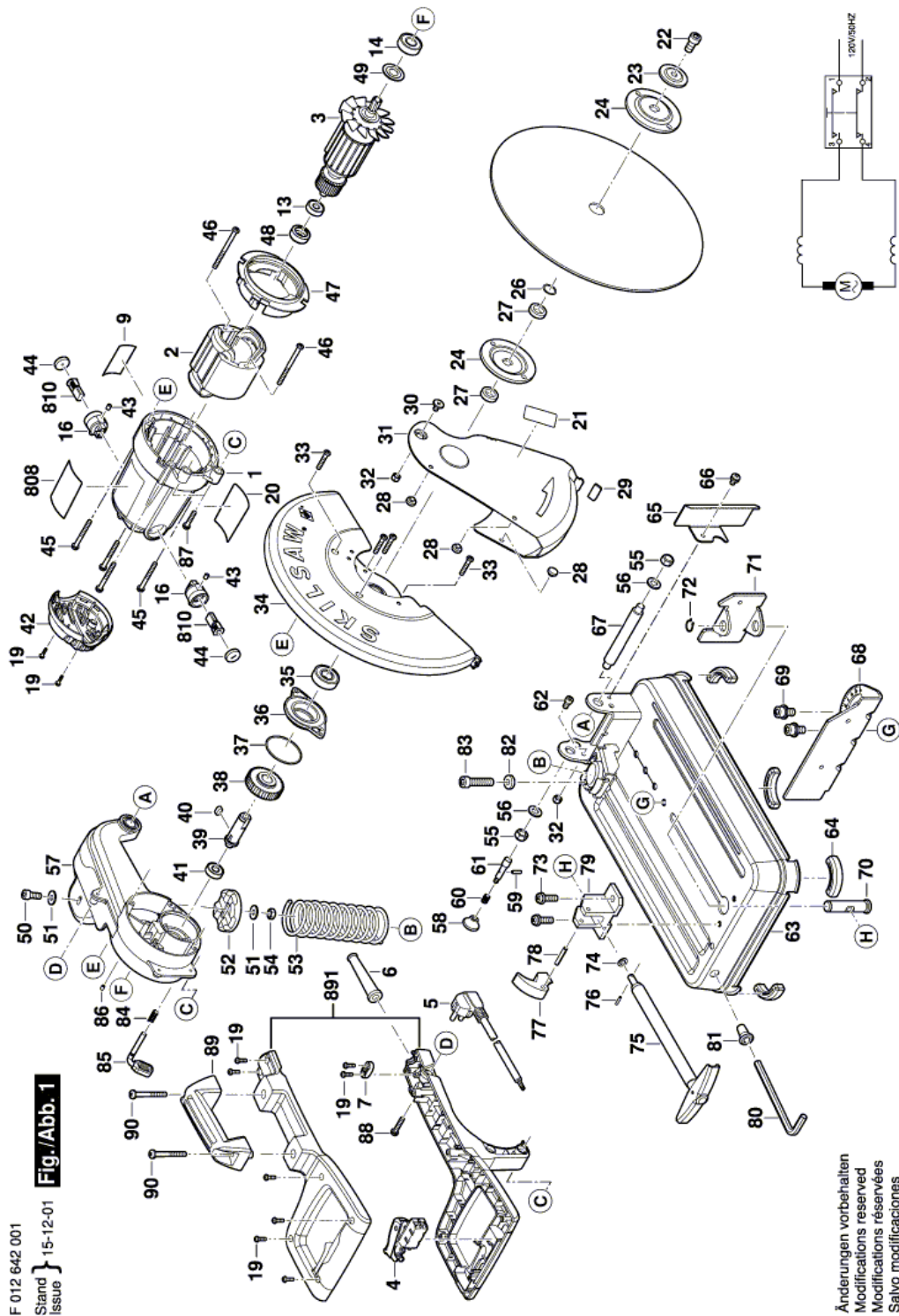
Cutoff saw - F 012 642 001 - SPT64MTA

Item	Part Number	Description	Illustration	Price	Quantity	Price Group
1	1 619 PA9 255	Motor Housing	1	\$ 11.12	1	25
2	1 619 PA9 256	Field	1	\$ 38.00	1	37
3	1 619 PA9 257	Armature	1	\$ 49.00	1	39
4	1 619 PA8 072	On-Off Switch	1	\$ 9.84	1	24
5	1 619 PA9 258	Power supply cord	1	\$ 11.12	1	25
6	1 619 PA9 259	Grommet	1	\$ 0.68	1	10
7	1 619 PA1 497	Cable Clip	1	\$ 0.68	1	10
9	1 619 PA9 261	Type Label	1	\$ 0.68	1	10
13	1 619 PA9 263	groove ball bearing	1	\$ 2.58	1	15
14	1 619 PA9 264	groove ball bearing	1	\$ 4.31	1	18
16	1 619 PA1 501	Brush Holder	1	\$ 1.70	2	13
19	1 619 PA1 503	Screw	1	\$ 0.68	10	10
20	1 619 PA9 265	Warning Label	1	\$ 0.68	1	10
21	1 619 PA9 266	Warning Label	1	\$ 0.68	1	10
22	1 619 PA8 383	Flange Bolt	1	\$ 0.68	1	10
23	1 619 PA9 267	Flange	1	\$ 0.68	1	10
24	1 619 PA9 268	Flange	1	\$ 3.73	2	17
26	1 619 PA1 526	O-Ring	1	\$ 0.68	1	10
27	1 619 PA1 574	Washer	1	\$ 0.68	2	10
28	1 619 PA9 269	Rubber Bar	1	\$ 0.68	3	10
29	1 619 PA1 571	Washer	1	\$ 0.68	1	10
30	1 619 PA1 565	Screw	1	\$ 0.68	1	10
31	1 619 PA9 270	Flap Guard	1	\$ 8.70	1	23
32	1 619 PA1 566	Nut	1	\$ 0.68	2	10
33	1 619 PA1 563	Screw	1	\$ 0.68	4	10
34	1 619 PA9 271	Safety Guard	1	\$ 17.50	1	30
35	1 619 PA9 272	groove ball bearing	1	\$ 3.73	1	17
36	1 619 PA9 273	Flange	1	\$ 4.31	1	18
37	1 619 PA9 274	O-Ring	1	\$ 0.68	1	10
38	1 619 PA9 275	Gear	1	\$ 9.84	1	24
39	1 619 PA9 276	Spindle	1	\$ 3.73	1	17
40	1 619 PA9 277	Woodruff Key	1	\$ 0.68	1	10

Item	Part Number	Description	Illustration	Price	Quantity	Price Group
41	1 619 PA9 278	groove ball bearing	1	\$ 2.94	1	16
42	1 619 PA9 279	End cap	1	\$ 2.01	1	14
43	1 619 PA1 505	Screw	1	\$ 0.68	2	10
44	1 619 PA1 504	Plug	1	\$ 0.68	2	10
45	1 619 PA1 546	Thread-forming tap. Screw	1	\$ 0.68	4	10
46	1 619 PA1 550	Screw	1	\$ 0.68	2	10
47	1 619 PA9 280	Air-Deflector Ring	1	\$ 1.12	1	11
48	1 619 PA9 281	Rubber Ring	1	\$ 0.68	1	10
49	1 619 PA9 282	Washer	1	\$ 0.68	1	10
50	1 619 PA1 559	Bolt	1	\$ 0.68	1	10
51	1 619 PA1 558	Plain Washer	1	\$ 0.68	2	10
52	1 619 PA1 557	Holder	1	\$ 3.73	1	17
53	1 619 PA9 283	Spring	1	\$ 5.72	1	20
54	1 619 PA1 560	Nut	1	\$ 0.68	1	10
55	1 619 PA1 555	Nut	1	\$ 0.68	2	10
56	1 619 PA1 511	Plain Washer	1	\$ 0.68	2	10
57	1 619 PA9 284	Arm	1	\$ 30.50	1	35
58	1 619 PA1 542	Cap Nut	1	\$ 1.70	1	13
59	1 619 PA1 540	Spring Pin	1	\$ 0.68	1	10
60	1 619 PA1 541	Spring	1	\$ 0.68	1	10
61	1 619 PA1 539	Shaft	1	\$ 0.68	1	10
62	1 619 PA1 578	Screw	1	\$ 0.68	1	10
63	1 619 PA9 285	Base	1	\$ 30.50	1	35
64	1 619 PA1 508	Rubber Bar	1	\$ 0.68	3	10
65	1 619 PA1 572	Protection cover	1	\$ 0.68	1	10
66	1 619 PA8 435	Screw	1	\$ 0.68	1	10
67	1 619 PA1 554	Shaft	1	\$ 2.58	1	15
68	1 619 PA9 286	Stop Bracket	1	\$ 4.94	1	19
69	1 619 PA8 402	Flange Bolt	1	\$ 0.68	2	10
70	1 619 PA9 287	Connecting Rod	1	\$ 1.70	1	13
71	1 619 PA9 288	Clamp Bracket	1	\$ 2.58	1	15
72	1 619 PA1 527	Spring retaining ring	1	\$ 0.68	1	10
73	1 619 PA9 289	Screw	1	\$ 0.68	2	10
74	1 619 PA1 517	Plain Washer	1	\$ 0.68	1	10
75	1 619 PA9 290	Clamp Screw	1	\$ 5.72	1	20
76	1 619 PA1 515	Spring Pin	1	\$ 0.68	1	10
77	1 619 PA8 407	Clamping Block	1	\$ 1.36	1	12
78	1 619 PA1 534	Spring Pin	1	\$ 0.68	1	10
79	1 619 PA1 535	Clamping Support	1	\$ 4.31	1	18
80	1 619 PA8 408	Adjusting Wrench	1	\$ 1.36	1	12
81	1 619 PA9 291	Holder	1	\$ 0.68	1	10
82	1 619 PA9 292	Hex Nut	1	\$ 0.68	1	10
83	1 619 PA8 409	Hexagon Bolt	1	\$ 0.68	1	10
84	1 619 PA1 561	Compression Spring	1	\$ 0.68	1	10
85	1 619 PA1 516	Locking Pin	1	\$ 1.12	1	11
86	1 619 PA1 577	Pin	1	\$ 0.68	1	10
87	1 619 PA9 293	Screw	1	\$ 0.68	2	10
88	1 619 PA1 573	Screw	1	\$ 0.68	1	10
89	1 619 PA9 294	Handle	1	\$ 0.68	1	10
90	1 619 PA9 295	Screw	1	\$ 0.68	2	10

Item	Part Number	Description	Illustration	Price	Quantity	Price Group
808	1 619 PA9 300	Nameplate		1 \$ 0.68	1	10
810	1 619 PA9 301	Carbon Brush		1 \$ 4.94	1	19
891	1 619 PA9 302	Handle		1 \$ 8.70	1	23

Illustration - Type E



Information subject to change without further notice.